

[54] TOY FIGURE

[75] Inventors: George W. Lucas, Jr., San Anselmo; Ralph McQuarrie, Berkeley; Joseph E. Johnston, Fairfax, all of Calif.; Stuart Freeborn, Esher, England

[73] Assignee: Lucasfilm, Ltd., San Rafael, Calif.

[**] Term: 14 Years

[21] Appl. No.: 141,597

[22] Filed: Apr. 18, 1980

[51] Int. Cl. D21-01

[52] U.S. Cl. D21/180; D21/171; D21/186

[58] Field of Search D21/180, 177, 166, 171, D21/186; D11/160

[56] References Cited

U.S. PATENT DOCUMENTS

D. 164,463 9/1951 White D21/186

OTHER PUBLICATIONS

Sears 1978 Xmas Book, p. 574, Illustration No. 13, left figure, Jawa.

Primary Examiner—Melvin B. Feifer
Attorney, Agent, or Firm—Townsend and Townsend

[57] CLAIM

The ornamental design for a toy figure, substantially as shown.

DESCRIPTION

FIG. 1 is a perspective front view of a toy figure illustrating the new design;
FIG. 2 is a perspective rear view thereof;
FIG. 3 is a front elevational view thereof;
FIG. 4 is a left side elevational view thereof;
FIG. 5 is a right side elevational view thereof;
FIG. 6 is a rear elevational view thereof;
FIG. 7 is a top plan view thereof;
FIG. 8 is a bottom view thereof.



FIG. 1.



FIG. 2.

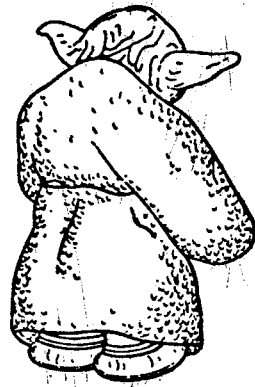


FIG. 3.



FIG. 4.



Fig. 5.



Fig. 6.

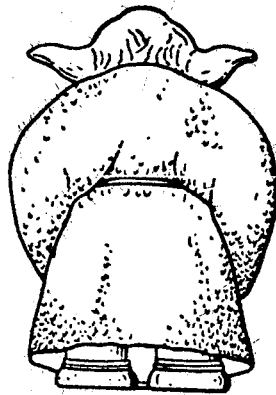


Fig. 7.

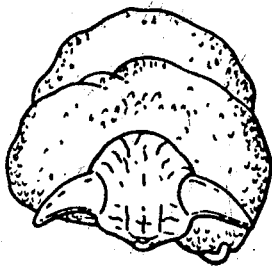


Fig. 8.

